

REGISTRATION & PROGRAM GUIDE

Sheraton Centre Toronto Hotel
Toronto, Ontario, Canada



Ontario
Long Term Care
Clinicians

2017 Conference

LONG TERM CARE FOR PRACTICING CLINICIANS
CLINICAL PEARLS IN LONG TERM CARE

OCTOBER 20—22, 2017



NEW THIS YEAR!

FULL & HALF DAY
WORKSHOPS!

ART GALLERY OF
ONTARIO SOCIAL
EVENT!

Ontario Long Term Care Clinicians
1143 Wentworth St. West, #202
Oshawa, ON L1J 8P7
office@oltcc.ca

T: 905-404-9545
F: 905-404-3727



www.oltcc.ca
@OnLTCC

OLTCC PRESIDENT'S MESSAGE



Ontario
Long Term Care
Clinicians

CONFERENCE COMMITTEE CHAIR MESSAGE



For forty years, long care physicians have come to the annual conference offered by the Ontario Long Term Care Physicians (OLTCP) and now the newly formed not-for-profit, Ontario Long Term Care Clinicians (OLTCC). Our membership and registration grows and includes our colleagues such as the pharmacists and nurse practitioners. We are

the experts in long term care.

The Vision of OLTCC is *All Ontarians in Long Term Care will receive excellent care*. Our Mission is to promote education, advocacy and engagement. We advocate for our residents by dialogue with the Ministry of Health and LTC, and other stakeholders. This conference, *Long Term Care for the Practicing Clinician*, not only provides current and relevant clinical information for long term care but provides an opportunity for our members to network and share their experiences.

I commend the Conference Planning Committee on this year's excellent program. There is something new and different every year. The Friday offering of workshops will provide a varied and more intense learning experience. An evening at the Art Gallery of Ontario, including the Guillermo del Tora exhibit, will be an opportunity to relax and meet others.

In response to past evaluations, this program is true to its theme, *Clinical Pearls in Long Term Care*. There is another theme. The voice of the LTC resident will resonate from the opening remarks on Saturday by the Ontario Patient Ombudsman to Sunday's closing panel on residents' safety. Attendees will leave as greater experts and advocates for long term care.

Fred Mather, MD
President, OLTCC



It will be my pleasure to welcome all of you to the 2017 Ontario Long Term Care Clinicians' Conference "Clinical Pearls in Long Term Care" this fall. Recognizing the challenges of practicing in an increasingly complex clinical environment, this year we are proposing a program focused on clinical issues and practical approaches to demanding situations in Long Term Care.

For the first time this year we will commence our conference with half and full day workshops discussing palliative care in LTC, wound care, elder law and management of BDD among other topics. This will be a great opportunity for an in-depth exploration of these clinical topics. Our planned social event on Friday evening at the Art Gallery of Ontario will offer a great opportunity for connecting with each other and networking.

We are pleased to have Ms. Christine Elliott, Ontario's first patient ombudsman open our plenaries with a talk on patient centered issues. Choosing Wisely Canada recommendations will follow together with plenary talks and workshops on a multitude of clinical topics: Parkinson's disease, dementia, appropriate prescribing, cannabinoids and palliative care, preventable hospital transfers and others. Panel discussions on Saturday and Sunday will provide an opportunity to interact with leaders in long term care on challenging clinical topics, coroner related issues and ethical questions in LTC.

We will continue to offer conference scheduling and evaluation through our user friendly conference app. Please also follow us on Twitter at #LTCPC17. Poster presentations will continue to enrich the educational offering of our conference.

I am looking forward to welcoming our physicians, nurse practitioners, pharmacists, administrators and other colleagues to our conference this year. See you in the fall!

Lorand Kristof, MD, MSc, CCFP (COE)
2017 Conference Chair

ONTARIO LONG TERM CARE CLINICIANS BOARD OF DIRECTORS, 2017

President	Fred	Mather
Past President	Evelyn	Williams
Vice President	Jobin	Varughese
Secretary	Julie	Auger
Treasurer	Ross	Moncur
Board Member	Robert	Cooper
Board Member	Louis Joseph	Kennedy
Board Member	Lorand	Kristof
Board Member	Philip	McGarry
Board Member	Nancy	McKeough
Board Member	Ben	Robert

CONFERENCE COMMITTEE, 2017

Chair	Lorand	Kristof
Member	Louis	Kennedy
Member	Fred	Mather
Member	Nancy	McKeough
Member	Ross	Moncur
Member	Evelyn	Williams



OLTCC OFFICE

1143 Wentworth Street West
Suite 202
Oshawa, ON L1J 8P7
T: 905-404-9545
F: 905-404-3727
office@oltcc.ca
www.oltcc.ca

Important Dates & Activities

Member Early Bird Rate Ends	Monday September 18, 2017
Regular Rates Apply	Up to Friday October 13, 2017
Hotel Cut Off Date for Room Reservations	Monday September 18, 2017
Cancellations Accepted, with a \$60.00 Fee	To Friday September 22, 2017
Delegate Substitution Policy Applies, no Fee	Up to Friday October 6, 2017
Delegate Substitution Policy Applies, \$60.00 Fee	From Saturday October 7, 2017
Late & Onsite Rates Apply	From Saturday October 14, 2017

Schedule of Activities

Onsite Registration Hours

Friday October 20	7:00 am — 4:30 pm
Saturday October 21	7:00 am — 5:30 pm
Sunday October 22	7:00 am — 4:00 pm

Friday October 20

Registration	7:00 am — 4:30 pm
Continental Breakfast	7:30 am — 9:00 am
Full Day Workshops (2)	8:45 am — 4:15 pm
Half Day Workshops (2)	8:45 am — 12:00 pm
Half Day Workshops (2)	1:00 pm — 4:15 pm
Refreshment Breaks	10:15 am — 10:30 am 2:30 pm — 2:45 pm
Luncheon	12:00 pm — 1:00 pm
AGO Social Event	5:45 pm — 9:00 pm

Saturday October 21

Registration	7:00 am — 5:30 pm
Breakfast	7:00 am — 8:30 am
Symposium	7:00 am — 8:00 am
Espresso Café & Lounge	7:00 am — 5:30 pm
Plenary Sessions	8:15 am — 11:30 am 3:30 pm — 4:30 pm
Award Presentation	11:30 am — 12:00 pm
Refreshment Breaks	9:30 am — 10:30 am 2:00 pm — 2:30 pm
Exhibits & Posters	9:30 am — 3:30 pm
Attended Poster Session	9:30 am — 10:30 am
Luncheon	12:00 pm — 1:00 pm
Workshops	1:00 pm — 2:00 pm 2:30 pm — 3:30 pm
OLTCC AGM	4:30 pm — 5:00 pm
OLTCP AGM	5:00 pm — 5:30 pm

Sunday October 22

Registration	7:00 am — 4:00 pm
Breakfast	7:00 am — 8:30 am
Symposium	7:15 am — 8:15 am
Espresso Café & Lounge	7:00 am — 3:30 pm
OMA Report	8:20 am — 8:30 am
OLTCC Report	8:30 am — 8:45 am
Plenary Sessions	8:45 am — 9:45 am 1:30 pm — 4:00 pm
Workshops	9:45 am — 10:45 am 11:30 am — 12:30 pm
Refreshment Break	10:45 am — 11:30 am
Posters	10:45 am — 1:30 pm
Luncheon	12:30 pm — 1:30 pm
MD Course Luncheon	12:30 pm — 1:30 pm
<i>(Invited guests only)</i>	

How to Register

1. Choose the package that you want and correctly identify the fee category (member, non-member, student) and the date you are registering.
2. Choose your workshops from the list provided.
3. Go online to www.oltcc.ca for the online registration option. If a member, log in using your login and password for the OLTCC registration system (not the same as the members only section).
4. Register by mail, by completing the registration form and mailing to Ontario Long Term Care Clinicians, 1143 Wentworth St. West, Suite 202, Oshawa, ON L1J 8P7.
5. Register by fax by completing the registration form and faxing to 1-905-404-3727. Workshops will not be confirmed until payment has been received.
6. Student registrations must also include proof of student status with their registration.

See Registration Pages for Payment Methods and the Cancellation Policy.



Keynote Speakers, Hot Topics, Panels!

**OPENING KEYNOTE SPEAKER—CHRISTINE ELLIOT,
PATIENT OMBUDSMAN—Saturday October 21**



ONTARIO'S FIRST PATIENT OMBUDSMAN: WHY EVERY EXPERIENCE MATTERS

Since opening the office on July 1, 2016, Christine has been travelling extensively around the province to learn more about patient and caregiver experiences, and how different they are depending on where people live. Attend this session to hear her insights, regional learnings and perspectives derived from numerous conversations, consultations and outreach activities.

**WENDY LEVINSON, MD, OC, PROFESSOR OF MEDICINE,
U OF T, CHAIR, CHOOSING WISELY CANADA &
INTERNATIONAL—Saturday October 21**



CHOOSING WISELY RECOMMENDATIONS FOR LTC

This Plenary will discuss role of Choosing Wisely Canada, discuss recommendations of CWC for LTC and by the end of the session, our care providers will be able to have a better understanding on how optimize treatments and tests in LTC based on CWC.

DAVID GRIMES, MD, FRCPC—Saturday October 21



MANAGEMENT OF PARKINSON'S DISEASE IN LONG TERM CARE

This Plenary will review Canadian Guidelines on Parkinson's disease, address particularities in managing Parkinson's disease in LTC setting, review complications of Parkinson's disease and briefly address other movement disorders in LTC ex. progressive supra nuclear palsy, Huntington's disease.

**MARK LOEB, MD, MSc, FRCPC
Sunday October 22**



THE MANAGEMENT OF URINARY TRACT INFECTIONS AND PNEUMONIAS IN LONG TERM CARE

This Plenary session will discuss challenges in assessing UTIs and pneumonia in LTC population, discuss management of UTI and pneumonia in LTC and provide an insight into how management of UTI/ pneumonia impacts hospital transfer.

**PANEL—MEETING RESIDENTS NEEDS IN LTC: OPPORTU-
NITIES AND CHALLENGES**

**ROBER P. SKINNER, DEE LENDER, PAULA CHIDWICK
Sunday October 22**



THE ROLE OF CORONERS IN LTC *Roger Skinner*

Dr. Skinner will provide updates on the Geriatric and Long Term Care Review Committee Annual Report, will summarize recent findings of violence in LTC and recommend strategies to reduce risk and improve safety and health of residents.



THE ROLE OF RESIDENTS' COUNCIL IN LTC *Dee Lender*

Dr. Lender will review goals of Resident Councils in LTC, discuss challenges in representing a collective resident voice and discuss new visions and modalities in engaging residents from LTC.



ETHICAL CHALLENGES IN LONG TERM CARE *Paula Chidwick*

Dr. Chidwick will discuss Ethical Consideration in decision making in Long Term Care and some of the ethical challenges around MAID in Long Term Care.

HOT TOPIC PANEL—Saturday October 21



PRACTICAL APPROACHES TO CLINICAL COMPLEXITIES IN LONG TERM CARE

**Moderator: Robert Cooper, MD
Panel: Fred Mather, MD; Andrea Moser, MD;
Louis Kennedy, MD; John Crosby, MD;
Kerstin Mossman, MD**

This panel will provide practical insight into challenging clinical scenarios in LTC based on best practices and existing evidence.



Registration Fees

MEMBER CONFERENCE FEES

NON MEMBER CONFERENCE FEES

MEDICAL RESIDENTS & STUDENTS CONFERENCE FEES

Full Package consists of your choice of 1 full day or 2 half day workshops Friday and then the Saturday & Sunday program

EARLY BIRD TO SEPTEMBER 18

Full Package, 3 days	\$1100
Saturday & Sunday	\$685
One Day, Saturday or Sunday	\$365

REGULAR FEES SEPT 19—OCT 13

Full Package, 3 days	\$1300
Saturday & Sunday	\$705
One Day, Saturday or Sunday	\$395

ONSITE FEES OCT 14—OCT 22

Full Package, 3 days	\$1500
Saturday & Sunday	\$750
One Day, Saturday or Sunday	\$460

MEMBER WORKSHOP FEES

If attending just the Friday program, or adding a workshop to your one or two day package.

WORKSHOP FEES, TO SEPTEMBER 18

Full Day Workshop	\$580
Half Day Workshop	\$280
Half Day Workshop Main-Pro+ Accredited	\$375

WORKSHOP FEES, TO OCTOBER 13

Full Day Workshop	\$600
Half Day Workshop	\$310
Half Day Workshop Main-Pro+ Accredited	\$425

WORKSHOP FEES, OCT 14—20

Full Day Workshop	\$800
Half Day Workshop	\$500
Half Day Workshop Main-Pro+ Accredited	\$525

TO OCTOBER 13

Full Package, 3 days	\$1350
Saturday & Sunday	\$725
One Day, Saturday or Sunday	\$455

ONSITE FEES OCT 14—OCT 22

Full Package, 3 days	\$1550
Saturday & Sunday	\$820
One Day, Saturday or Sunday	\$565

NON MEMBER WORKSHOP FEES

If attending just the Friday program, or adding a workshop to your one or two day package.

WORKSHOP FEES, TO OCTOBER 13

Full Day Workshop	\$610
Half Day Workshop	\$320
Half Day Workshop Main-Pro+ Accredited	\$435

WORKSHOP FEES, OCT 14-OCT 20

Full Day Workshop	\$810
Half Day Workshop	\$510
Half Day Workshop Main-Pro+ Accredited	\$530

TO OCTOBER 13

Full Package, 3 days	\$560
Saturday & Sunday	\$360
One Day, Saturday or Sunday	\$200

ONSITE FEES OCT 14—22

Full Package, 3 Days	\$785
Saturday & Sunday	\$430
One Day, Saturday or Sunday	\$285

STUDENT WORKSHOP FEES

If attending just the Friday program, or adding a workshop to your one or two day package.

WORKSHOP FEES, TO OCTOBER 13

Full Day Workshop	\$300
Half Day Workshop	\$150
Half Day Workshop Main-Pro+ Accredited	\$215

WORKSHOP FEES, OCT 14-OCT 20

Full Day Workshop	\$400
Half Day Workshop	\$250
Half Day Workshop Main-Pro+ Accredited	\$265

ART GALLERY OF ONTARIO—SOCIAL EVENT FRIDAY OCTOBER 20, 2017—5:45 PM—9:00 PM

Includes shuttle to and from AGO, reception, one drink ticket and entrance to the exhibits

One Ticket, to October 13	\$50
One Ticket, Oct 13—Oct 20	\$65



AGO
Art Gallery of Ontario

Location and Accommodations

Sheraton Centre Toronto Hotel

123 Queen Street West,
Toronto, Ontario M5H 2M9



Telephone: 1-888-627-7175—Be sure to request the **Ontario Long Term Care Clinicians room block or code OJ15AB**



Online: <https://www.starwoodmeeting.com/Book/OJ15AB>

A block of rooms is being held at the Sheraton Centre Toronto until Monday **September 18, 2017**. The Ontario Long Term Care Clinicians and the Sheraton Centre Toronto cannot guarantee availability at any time. The applicable rate for a standard room for this event is **\$216.00 per night plus taxes**. All rooms are single or double occupancy and rates are available October 18th to October 22nd, 2017.

Cancellation Clause: A deposit equal to one night's stay is required to hold each guest's reservation at the time of reservation. Full refund of this deposit will be given to cancellations received until 72 hours prior to arrival. For cancellations received within 72 hours of arrival, the deposit is non-refundable.

Check In: Check in time is 3:00pm. Check out time is 12 noon.

Parking: Valet Parking and Self-Parking are available through the Sheraton Centre Toronto Hotel. The self-park lot is attached to the hotel, located under City Hall. Various parking is also available around the hotel including the Eaton Centre which is approximately 2 blocks from the Sheraton Centre Toronto Hotel.

About the Sheraton: The Sheraton Centre Toronto Hotel is located near all of Toronto's attractions and connected to the financial and entertainment districts by way of the PATH, a 16 mile underground network of shops and services. World-class dining, theatres, and museums are steps away.

Mobile App



Sponsored By:



The mobile app offers attendees a new user experience. The app will allow access to the agendas, as well as speakers and session descriptions. There will be an interactive map of the venue including the locations of all of the sessions and sponsor and exhibitor information. Attendees will be able to use the app for live polling, access surveys and even tweet their experience. Full details and exciting updates will be sent out leading up to the conference.

Espresso Café & Lounge

PointClickCare



A lounge area will be set up for attendees take a break, have a coffee and have the opportunity to meet with colleagues and friends while attending the conference. Watch for more details around this lounge in the coming weeks.

Attended Poster Session

The Attended Poster Session is scheduled for Saturday 9:30 am to 10:30 am. Authors of the posters will be available for questions and queries about the posters on display. The posters will also be available for viewing on Saturday & Sunday. Posters will demonstrate a research project, best practice or current trend in Long Term Care.

General Information

BADGES



Once registered, please ensure you wear your badge for entrance to all sessions, meals and reception. Your badge must be visible and worn throughout the event in order to have access to the program.

CONCURRENT WORKSHOP CHOICES



When selecting your workshop choice, and it appears that your choice is not available, that indicates the choice you are making is full and not available. Please move to another choice listed, which is still available. The online system automatically removes the workshop from the selections once full. If registering by fax or email, the office will notify you directly by email if you have selected a workshop that is full and you will be given the option of others that are still open. Workshops are repeated twice.

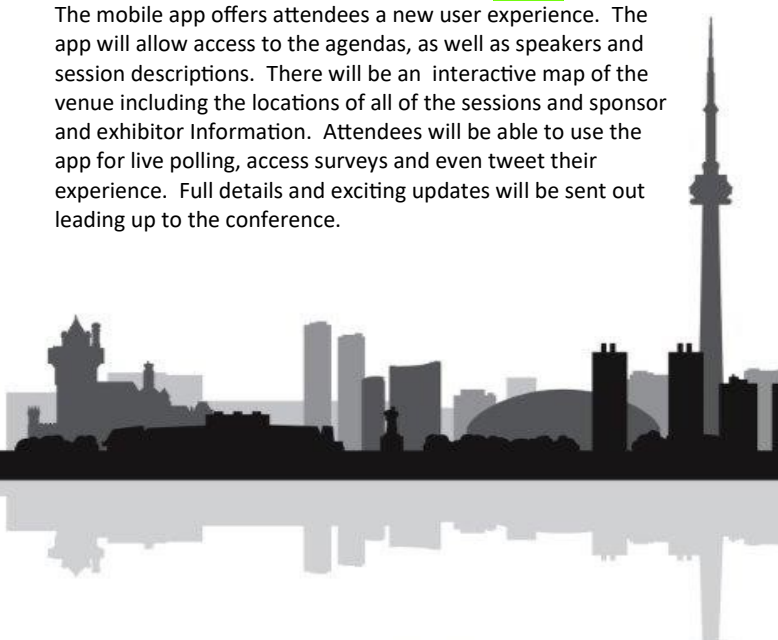
PRESENTATIONS AVAILABLE THROUGH THE WEBSITE

Prior to the conference, all authorized presentations will be also be posted on the website and will be password protected for all of the conference attendees only. This will allow you to download what presentations you would like to have while at the conference.

There will be no USB's available for the 2017 conference, nor hand-out binders.

REGISTRATION AT THE CONFERENCE

The OLTCC registration desk will be located on the Lower Concourse Level Please register at the OLTCC registration desk to pick up your badge and conference material.



FRIDAY OCTOBER 20, 2017

DAY
ONE

FULL DAY AND HALF DAY WORKSHOPS ART GALLERY OF ONTARIO SOCIAL EVENT



7:00 AM—4:30 PM

REGISTRATION OPEN

7:30 AM—9:00 AM

CONTINENTAL BREAKFAST

When choosing workshops for the day you have your choice of either one full day workshop or two half day workshops.

8:45 AM—4:15 PM

Break: 10:15 am—10:30 am
Lunch: 12:00 pm—1:00 pm
Break: 2:30 pm—2:45 pm

FULL DAY WORKSHOP—#101

PALLIATIVE CARE APPROACH IN LONG TERM CARE

Dr. Lori E. Teeple MD CCFP (EM) FCFP (PC) Palliative Care); Dr. Anges Kluz MD, CCFP (PC)

Learning Objectives:

1. Identify patient who would benefit from a palliative care approach.
2. Clarify goals of care and engage in advance care planning conversations.
3. Address common palliative symptoms.

8:45 AM—4:15 PM

Break: 10:15 am—10:30 am
Lunch: 12:00 pm—1:00 pm
Break: 2:30 pm—2:45 pm

FULL DAY WORKSHOP—#102

LONG-TERM CARE HOMES AND THE LAW

Jane E. Meadus, Barrister & Solicitor, Institutional Advocate, Advocacy Centre for the Elderly

Learning Objectives:

1. Detailing the legal environment in LTC.
2. Discussing issues of consent & capacity in LTC setting.
3. Detailing role of substitute decision makers in LTC settings.

8:45 AM—12:00 PM

Break: 10:15 am—10:30 am
Lunch: 12:00 pm—1:00 pm

9 MAINPRO+ CREDITS
MAXIMUM 30 PARTICIPANTS

HALF DAY WORKSHOP—#103

WOUND CARE MANAGEMENT IN LONG TERM CARE

Evelyn Williams, MD, CCFP (COE), FCFP, MHSc, CMD; Susan Deering, MD

Learning Objectives:

1. Assessment of a wound.
2. Evaluate local and systemic causes of a wound.
3. Propose an effective treatment plan, including debridement and topical dressings.

8:45 AM—12:00 PM

Break: 10:15 am—10:30 am
Lunch: 12:00 pm—1:00 pm

HALF DAY WORKSHOP—#104

BEHAVIOURAL SYMPTOMS OF DEMENTIA IN LONG TERM CARE: A CASE BASED APPROACH

Andrea Moser, MD, MSc, CCFP, FCFP, COE, Baycrest Centre for Geriatric Care

Learning Objectives:

1. Assessment of behavioural and psychological symptoms (BPSD) of dementia in LTC.
2. Application of assessment tools and resources for BPSD.
3. Utilizing non pharmacologic strategies in the management of BPSD in LTC.
4. Optimizing pharmacologic management in the treatment of BPSD in LTC.

1:00 PM—4:15 PM

Lunch: 12:00 pm—1:00 pm
Break: 2:30 pm—2:45 pm

HALF DAY WORKSHOP—#105

MEDICAL CANNABIS CASE-BASED WORKSHOP

Danial Schecter, MD, CCFP; Executive Director, Cannabinoid Medical Clinic

Learning Objectives:

1. Overview of the science and pharmacology of cannabinoids.
2. Overview of cannabinoid availability in Canada currently.
3. Interactive Patient cases.
4. Key takeaway: audience to be confident in counselling, initiation, titration, monitoring and education of patients in LTC settings.
5. Detailed learning include: Distribution, Storage/Security, Administration of cannabinoids in LTC setting (Various forms; delivery devices), Resources available to LTC physician.

1:00 PM—4:15 PM

Lunch: 12:00 pm—1:00 pm
Break: 2:30 pm—2:45 pm

HALF DAY WORKSHOP—#106

DEPRESCRIBING IN LTC: THE ART OF THE POSSIBLE

Sid Feldman, MD, CCFP (COE), FCFP, CMD
Wade Thompson, BScPhm, MSc

Learning Objectives:

1. Recognize opportunities when de-prescribing is possible and prudent.
2. Identify strategies to de-prescribe key medications.
3. Develop and implement plans for de-prescribing.

AGO
Art Gallery of Ontario

5:45 PM—9:00 PM—ART GALLERY OF ONTARIO SOCIAL EVENT

This event includes a shuttle to and from the AGO, reception, including one drink ticket and entrance to the exhibits—**Maximum number of 100 attendees**

You must purchase a ticket for this event for conference attendees and guests. The ticket cost is \$50.00 plus applicable taxes prior to October 13, 2017. The onsite ticket price is \$65.00 plus applicable taxes from October 14th to October 20th, 2017.

TORONTO — The Art Gallery of Ontario (AGO) will present the only Canadian appearance of a new exhibition that offers a rare glimpse into the creative process of famed filmmaker **Guillermo del Toro**. Organized by the AGO in partnership with the Los Angeles County Museum of Art (LACMA) and the Minneapolis Institute of Art (Mia), **Guillermo del Toro: At Home with Monsters** makes its Canadian debut at the AGO on **Sept. 30, 2017** and runs to **Jan. 7, 2018**.

ABOUT GUILLERMO DEL TORO

Guillermo del Toro (b. 1964) is one of the most inventive filmmakers of his generation. Beginning with *Cronos* (1993) and continuing through *The Devil's Backbone* (2001), *Hellboy* (2004), *Pan's Labyrinth* (2006), *Pacific Rim* (2013), and *Crimson Peak* (2015), among many other film, television, and book projects, del Toro has reinvented the genres of horror, fantasy and science fiction. Working with a team of craftsmen, artists, and actors—and referencing a wide range of cinematic, pop-culture, and art-historical sources—del Toro recreates the lucid dreams he experienced as a child in Guadalajara, Mexico. He now works internationally with a cherished home base he calls "Bleak House" in the suburbs of Los Angeles.



DAY TWO

PLENARY SESSIONS, WORKSHOPS, POSTERS EXHIBITS



7:00 AM—5:30 PM

REGISTRATION OPEN

7:00 AM—8:30 AM

BREAKFAST

Sponsored in part by

Sponsored in part by **NOVARTIS**

7:00 AM—8:00 AM

NOVARTIS

Unaccredited Symposium
sponsored by Novartis
Pharmaceuticals Canada

Learning Objectives:

By the end of this session, participants should be able to:

1. Describe the burden of heart failure (HF) in Canada and the pathophysiology of the disease.
2. Recognize the importance of optimal evidence-based treatments in HF and the potential impact on patient quality of life.
3. Discuss the role of primary care in the management of HF with a focus on the long-term care setting.

8:00 AM—8:15 AM

OPENING REMARKS & WELCOME

Fred Mather, MD, President, OLTC

8:15 AM—8:45 AM

KEYNOTE SPEAKER

ONTARIO'S FIRST PATIENT OMBUDSMAN:
WHY EVERY EXPERIENCE MATTERS

Christine Elliott, Patient Ombudsman



Since opening the office on July 1, 2016, Christine has been travelling extensively around the province to learn more about patient and caregiver experiences, and how different they are depending on where people live. Attend this session to hear her insights, regional learnings and perspectives derived from numerous conversations, consultations and outreach activities.

Learning Objectives:

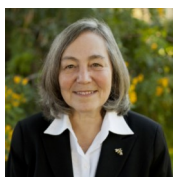
1. Get an overview of the mission, vision and mandate of the Office of the Patient Ombudsman.
2. Hear about the Patient Ombudsman's provincial tour and observations, regional learnings and perspectives derived from numerous patient consultations and outreach activities.
3. Understand what the role of the Patient Ombudsman and learn more about the complaints resolution and investigation processes.

8:45 AM—9:15 AM

CHOOSING WISELY

RECOMMENDATIONS FOR LONG TERM CARE

Wendy Levinson, MD, OC; Professor of Medicine, University of Toronto; Chair, Choosing Wisely Canada & International



Learning Objectives:

1. Discuss role of Choosing Wisely Canada.
2. Discuss recommendations of CWC for LTC.
3. By the end of the session, our care providers will be

able to have a better understanding on how optimize treatments and tests in LTC based on CWC.

9:15 AM—9:30 AM

OLTCC ADVOCACY REPORT

Fred Mather, MD, President, OLTC

9:30 AM—10:30 AM

Sponsored by

9:30 AM—10:30 AM

Sponsored by

REFRESHMENT BREAK, EXHIBITS,
ATTENDED POSTER SESSION,
ESPRESSO CAFÉ & LOUNGE

10:30 AM—11:30 AM

MANAGEMENT OF PARKINSON'S
DISEASE IN LONG TERM CARE

David Grimes, MD, FRCPC



Learning Objectives:

1. Review Canadian Guidelines on Parkinson's disease.
2. Address particularities in managing Parkinson's disease in LTC setting.
3. Review complications of Parkinson's disease.
4. Briefly address other movement disorders in LTC ex. progressive supra nuclear palsy, Huntington's disease.

11:30 AM—12:00 PM

OLTCC AWARD
PRESENTATIONS

Julie Auger, MD
OLTCC Board of
Directors (Secretary)



12:00 PM—1:00 PM

Sponsored by

LUNCH

EXHIBITS & POSTERS

1:00 PM—2:00 PM

CONCURRENT WORKSHOPS #201-#208

Select only one workshop from this time slot. These workshops are repeated from 2:30 PM—3:30 PM

WORKSHOP #201 1:00 PM—2:00 PM

THE USE OF MENTAL HEALTH LEGISLATION AND FORM 1'S IN THE
CONTEXT OF BEHAVIORAL DISTURBANCE IN LONG TERM CARE

Leslie Giddens-Zuker BA, BSW, MSW, RSW; Mario Tsokas, BSW, RSW

Learning Objectives:

1. The ABC's of Mental health legislation and how it would apply to residents of long term care.
2. The use of CTO/CODE WHITE policies and FORM 1's.
3. Managing physical aggression and agitation with a combination of behavioral and pharmacological interventions.

WORKSHOP #202 1:00 PM—2:00 PM

IDENTIFYING POTENTIALLY HARMFUL MEDICATIONS WHEN PRESCRIBED
INAPPROPRIATELY IN PATIENTS WITH CHRONIC KIDNEY DISEASE, OR
IMPAIRED RENAL FUNCTION, IN THE LONG-TERM CARE SETTING

Allan Grill MD, CCFP (COE), MPH, FCFP, CCPE

Learning Objectives:

1. To recognize the common causes of adverse drug reactions (ADRs) and implement steps within your long-term care practice to help prevent them.
2. To identify a list of commonly prescribed, potentially harmful medications when used inappropriately for patients with chronic kidney disease (CKD) or end-stage renal disease (ESRD) living in long-term care.
3. To determine which medications should be dose-adjusted or avoided in patients with decreased kidney function.

SATURDAY OCTOBER 21, 2017

DAY TWO

Continued



WORKSHOP #203 1:00 PM—2:00 PM

IMPROVING EFFICIENCY & QUALITY OF CARE THROUGH CLARIFYING CONSENT, CAPACITY, AND SUBSTITUTE DECISION MAKING IN LONG TERM CARE: ACCESSING ONTARIO'S CONSENT FRAMEWORK

Jill Oliver, PhD, Paula Chidwick, PhD

Learning Objectives:

1. The role of the clinician in obtaining consent and evaluating capacity.
2. How and when to access Ontario's Consent and Capacity Board.
3. How and when to access the Office of the Public Guardian and Trustee in order to obtain consent.
4. The PoET (Prevention of Error-based Transfers) Ethics Quality Improvement Project's demonstration of improved quality of care and efficiency.

WORKSHOP #204 1:00 PM—2:00 PM

PRACTICING WISELY IN LONG TERM CARE

Andrea Moser, MD, CMD, CCFP (COE); Jobin Varughese, MD, CMD, CCFP (COE)

Learning Objectives:

1. To learn the concepts of early adoption of palliative approach to care using communication.
2. To provide instruction regarding appropriate prescribing and use of investigation.
3. To learn the Choosing Wisely Canada recommendations regarding Long Term Care.

WORKSHOP #205 1:00 PM—2:00 PM

REDUCING FRACTURE RISK IN LONG-TERM CARE: ADDRESSING CARE GAPS WITH FRACTURE PREVENTION RECOMMENDATIONS FOR FRAIL OLDER ADULTS

Alexandra Papaioannou, BScN, MD, MSc, FRCP (C), FACP; Lynn Nash, MD, CCFP, FCFP

Learning Objectives:

1. To apply the LTC Fracture Prevention guideline recommendations.
2. To recognize challenges and barriers to implement the recommendations and use enablers.
3. To manage fracture prevention in high-risk patients with multiple chronic conditions.

WORKSHOP #206 1:00 PM—2:00 PM

WHY MUSIC CARE WORKS WITH RESIDENTS IN LONG TERM CARE

Bev Foster, MA, BEd, BMus, ARCT, AMus

Learning Objectives:

1. Demonstrate knowledge of the music care approach.
2. Identify reasons how and why music, especially singing, works with residents in LTC.
3. Utilize Pathways, a comprehensive, research-informed singing program for residents living with dementia.

WORKSHOP #207 1:00 PM—2:00 PM

CANNABINOID THERAPIES IN PALLIATIVE CARE

Vincent Maida, MD, MSc, BSc, CCFP (PC), FCFP, ABHPM

Learning Objectives:

1. Discuss the scientific basis for cannabinoid therapies.
2. Integrate cannabinoids as effective agents for poly-symptom management as well as potential disease modulation.
3. Reflect on the range of cannabinoid products and their routes of administration.
4. Explore the Health Canada regulations regarding the use of medical cannabis.
5. Review the current evidence based research on the use of cannabinoid therapies.

This is a non-certified Workshop

WORKSHOP #208 1:00 PM—2:00 PM

DEACTIVATING CARDIOVASCULAR IMPLANTABLE ELECTRONIC DEVICES (CIED): ETHICAL CONSIDERATIONS IN PALLIATIVE CARE AND AT END OF LIFE

Gwendolyn D. Cleveland, RN, BScN, MEd

Learning Objectives:

At the end of the workshop, participants will be able to:

1. Differentiate the different types of cardiovascular implantable electronic devices.
2. Describe the ethical issues related to the deactivation of a cardiovascular implantable electronic device.
3. Determine when to initiate a discussion related to deactivation of CIEDs in palliative care and end of life care planning.

2:00 PM—2:30 PM

Presented by: Shink research

REFRESHMENT BREAK, EXHIBITS, POSTERS

2:30 PM—3:00 PM

Presented by: JoinClickCare

ESPRESSO CAFÉ & LOUNGE

2:30 PM—3:30 PM

**CONCURRENT WORKSHOPS REPEATED
#301—#308**

Choose one workshop from this time slot. See description of each listed above.

WORKSHOP #301 2:30 PM—3:30 PM

THE USE OF MENTAL HEALTH LEGISLATION AND FORM 1'S IN THE CONTEXT OF BEHAVIORAL DISTURBANCE IN LONG TERM CARE

Leslie Giddens-Zuker BA, BSW, MSW, RSW; Mario Tsokas, BSW, RSW

WORKSHOP #302 2:30 PM—3:30 PM

IDENTIFYING POTENTIALLY HARMFUL MEDICATIONS WHEN PRESCRIBED INAPPROPRIATELY IN PATIENTS WITH CHRONIC KIDNEY DISEASE, OR IMPAIRED RENAL FUNCTION, IN THE LONG-TERM CARE SETTING

Allan Grill MD, CCFP(COE), MPH, FCFP, CCPE

WORKSHOP #303 2:30 PM—3:30 PM

IMPROVING EFFICIENCY & QUALITY OF CARE THROUGH CLARIFYING CONSENT, CAPACITY, AND SUBSTITUTE DECISION MAKING IN LONG TERM CARE: ACCESSING ONTARIO'S CONSENT FRAMEWORK

Jill Oliver, PhD, Paula Chidwick, PhD

SATURDAY OCTOBER 21, 2017

DAY TWO

Continued



WORKSHOP #304 2:30 PM—3:30 PM

PRACTICING WISELY IN LONG TERM CARE

Andrea Moser, MD, CMD, CCFP (COE); Jobin Varughese, MD, CMD, CCFP (COE)

WORKSHOP #305 2:30 PM—3:30 PM

REDUCING FRACTURE RISK IN LONG-TERM CARE: ADDRESSING CARE GAPS WITH FRACTURE PREVENTION RECOMMENDATIONS FOR FRAIL OLDER ADULTS

Alexandra Papaioannou, BScN, MD, MSc, FRCP (C), FACP; Lynn Nash, MD, CCFP, FCFP

WORKSHOP #306 2:30 PM—3:30 PM

WHY MUSIC CARE WORKS WITH RESIDENTS IN LONG TERM CARE

Bev Foster, MA, BEd, BMus, ARCT, AMus

WORKSHOP #307 2:30 PM—3:30 PM

CANNABINOID THERAPIES IN PALLIATIVE CARE

Vincent Maida, MD, MSc, BSc, CCFP (PC), FCFP, ABHPM

*This is a non-certified
Workshop*

WORKSHOP #308 2:30 PM—3:30 PM

DEACTIVATING CARDIOVASCULAR IMPLANTABLE ELECTRONIC DEVICES (CIED): ETHICAL CONSIDERATIONS IN PALLIATIVE CARE AND AT END OF LIFE

Gwendolyn D. Cleveland, RN, BScN, MEd

3:30 PM—4:30 PM

PRACTICAL APPROACHES TO CLINICAL COMPLEXITIES IN LONG TERM CARE

Moderator: Robert Cooper, LLB, JD, MD, CCFP, FCFP, FASAM, DABAM

This panel will provide practical insight into challenging clinical scenarios in LTC based on best practices and existing evidence.

John Crosby, MD

Louis Kennedy, MD

Fred Mather, MD

Andrea Moser, MD, CMD, CCFP (COE)

Kerstin Mossman, MD CCFP (COE) FCFP BScN

Learning Objectives:

1. Discuss practical approaches, best practices and available evidence in the care of older adults in a LTC setting.
2. Discuss processes in the care of the older adults in a LTC setting.



4:30 PM—5:00 PM

Members Only

OLTCC ANNUAL GENERAL MEETING

5:00 PM—5:30 PM

Members Only

OLTCP ANNUAL GENERAL MEETING

5:30 PM

FREE EVENING



SUNDAY OCTOBER 22, 2017

DAY THREE

PLENARY SESSIONS, WORKSHOPS, POSTERS EXHIBITS



Ontario
Long Term Care
Clinicians

7:00 AM—4:00 PM

REGISTRATION OPEN

7:00 AM—8:30 AM

BREAKFAST

7:15 AM—8:15 AM

AstraZeneca 

Unaccredited
Symposium
sponsored by
Astra Zeneca

SYMPOSIUM

**ANTIMUSCARINICS
(ANTICHOLINERGICS) IN COPD**

Dr. Ronald Grossman, MD, MSc, DCH,
PhD, FRCP(C), FRCP(E), Professor of
Medicine, University of Toronto, Previous
Chief of Medicine, Credit Valley Hospital,
Mississauga, Ontario

Learning Objectives:

1. Review current treatment guidelines for COPD.
2. Review the role of antimuscarinic therapy.
3. Review the clinical efficacy, safety and tolerability data for antimuscarinics.

8:15 AM—8:20 AM

OPENING REMARKS

Lorand Kristof, MD, MSc, CCFP (COE)
2017 Conference Chair

8:20 AM—8:30 AM

OMA REPORT

8:30 AM—8:45 AM

OLTCC REPORT

Fred Mather, MD, President, Ontario
Long Term Care Clinicians

8:45 AM—9:45 AM

**THE ROLE OF THE OFFICE OF THE
PUBLIC GUARDIAN AND TRUSTEE
(OPGT) IN LONG TERM CARE**

Jill Steinman, Manager, Intake and
Treatment Decisions Unit, Office of the
Public Guardian and Trustee

Learning Objectives:

1. Review situations in LTC where an incompetent resident does not have a substitute decision maker (SDM).
2. Advise when the OPGT should be contacted.
3. Give examples of OPGT involvement in the care of a competent resident.
4. Inform about how to get consent when OPGT is the SDM.

9:45 AM—10:45 AM

CONCURRENT WORKSHOPS #401—#408

Select only one workshop from this time slot. These workshops are repeated from 11:30 AM—12:30 PM (Except #408, which is not repeated)

WORKSHOP #401 9:45 AM—10:45 AM

PRACTICAL APPROACH TO THE NIGHTMARE MEDICATION LIST IN LONG TERM CARE

Michelle Gibson MD, MEd, CCFP (COE), FCFP; Erin Beattie, MD, MSc, CCFP

Learning Objectives:

Participants will:

1. Learn and apply an approach to a challenging medication list.
2. Develop practical strategies for de-prescribing.
3. Discuss particular approaches to particularly challenging classes of medications, including benzodiazepines and opioids.

WORKSHOP #402 9:45 AM—10:45 AM

PALLIATIVE AND END-OF-LIFE CARE – TIME TO TAKE OWNERSHIP IN LONG-TERM CARE HOMES

Jobin Varughese, MD, CMD, CCFP (COE); Daphna Grossman, MD, CCFP (PC), FCFP

Learning Objectives:

1. Define “palliative care” and the “palliative care approach”.
2. Identify patients who could benefit from a palliative care approach earlier in the illness.
3. Activate a palliative care approach earlier in the illness trajectory.

WORKSHOP #403 9:45 AM—10:45 AM

DIABETES AND DEMENTIA – MANAGING A COMPLEX DISEASE IN A CHALLENGING POPULATION

Afshan Zahedi, BASc, MD, FRCPC; Freda Leung, RPh, CDE, CGP, CRE

Learning Objectives:

1. Review the epidemiology and scope of the problem in older adults.
2. Identify challenges in managing diabetes in patients with dementia.
3. Discuss clinical pearls and best practices to improve diabetes care in this population.

WORKSHOP #404 9:45 AM—10:45 AM

ACCREDITATION STANDARDS FOR LONG-TERM CARE

Jill Allison, BSc, MBA

Learning Objectives:

1. Increase knowledge of CARF accreditation standards for the long-term care sector.
2. Understand CARF's accreditation process.
3. Increase familiarity with research on the benefits of accreditation in this sector.



SUNDAY OCTOBER 22, 2017

DAY THREE

Continued



WORKSHOP #405 9:45 AM—10:45 AM

TEACHING IN THE NURSING HOME: TAILORING OUR APPROACH TO LEARNER NEEDS

Abbas Ghavam-Rassoul, MD, CCFP, FCFP; Sid Feldman, MD, CCFP (COE), FCFP, CMD

Learning Objectives:

At the end of this session, participants will be better able to:

1. Identify individual learner needs.
2. Implement techniques to deal with specific learner issues.
3. Assess whether learners are improving.

WORKSHOP #406 9:45 AM—10:45 AM

THE MANAGEMENT OF NEUROPSYCHIATRIC SYMPTOMS OF DEMENTIA IN LONG TERM CARE

Dallas Seitz, MD, PhD, FRCPC

Learning Objectives:

1. Review the spectrum of neuropsychiatric symptoms associated with dementia.
2. Discuss importance of appropriate management of neuropsychiatric symptoms.
3. Discuss best practices in pharmacological and non-pharmacological management of neuropsychiatric symptoms of dementia.

WORKSHOP #407 9:45 AM—10:45 AM

THE TOP 10 GERIATRIC PAPERS OF 2017

Chris Brymer, MSc, MD, FRCPC

Learning Objectives:

1. Critically appraise of recent relevant articles on care of the older adults.
2. Discuss how recent studies change our practice in caring for older adults in LTC.

WORKSHOP #408 9:45 AM—10:45 AM

Please note: this Workshop is only running at this time, it is not repeated.

THE ISSUE OF ANTIBIOTIC STEWARDSHIP IN LONG TERM CARE

Nick Daneman, MD, FRCPC, MSc

Learning Objectives:

1. Discuss issues of antibiotic overuse and prescriber behaviours in LTC.
2. Discuss appropriate antibiotic prescribing practices in LTC.

10:45 AM—11:30 AM **REFRESHMENT BREAK, EXHIBITS, POSTERS**
Sponsored by thinkresearch

10:45 AM—11:30 AM **ESPRESSO CAFÉ & LOUNGE**
Sponsored by PointClickCare



11:30 AM—12:30 PM CONCURRENT WORKSHOPS REPEATED #501—#507

Choose one workshop from this time slot. See description of each listed above. Please note: 908 is not repeated and is not listed below.

WORKSHOP #501 11:30 AM—12:30 PM

PRACTICAL APPROACH TO THE NIGHTMARE MEDICATION LIST IN LONG TERM CARE

Michelle Gibson MD, MEd, CCFP (COE), FCFP; Erin Beattie, MD, MSc, CCFP

WORKSHOP #502 11:30 AM—12:30 PM

PALLIATIVE AND END-OF-LIFE CARE – TIME TO TAKE OWNERSHIP IN LONG-TERM CARE HOMES

Jobin Varughese, MD, CMD, CCFP (COE); Daphna Grossman, MD, CCFP (PC), FCFP

WORKSHOP #503 11:30 AM—12:30 PM

DIABETES AND DEMENTIA – MANAGING A COMPLEX DISEASE IN A CHALLENGING POPULATION

Afshan Zahedi, BSc, MD, FRCPC; Freda Leung, RPh, CDE, CGP, CRE

WORKSHOP #504 11:30 AM—12:30 PM

ACCREDITATION STANDARDS FOR LONG-TERM CARE

Jill Allison, BSc, MBA

WORKSHOP #505 11:30 AM—12:30 PM

TEACHING IN THE NURSING HOME: TAILORING OUR APPROACH TO LEARNER NEEDS

Abbas Ghavam-Rassoul, MD, CCFP, FCFP; Sid Feldman, MD, CCFP (COE), FCFP, CMD

WORKSHOP #506 11:30 AM—12:30 PM

THE MANAGEMENT OF NEUROPSYCHIATRIC SYMPTOMS OF DEMENTIA IN LONG TERM CARE

Dallas Seitz, MD, PhD, FRCPC

WORKSHOP #507 11:30 AM—12:30 PM

THE TOP 10 GERIATRIC PAPERS OF 2017

Chris Brymer,

12:30 PM—1:30 PM **LUNCH**

Sponsored by Bristol-Myers Squibb Pfizer

12:30 PM—1:30 PM **EXHIBITS, POSTERS**

12:30 PM—1:30 PM **ESPRESSO CAFÉ & LOUNGE**
Sponsored by PointClickCare

SUNDAY OCTOBER 22, 2017

DAY THREE

Continued



1:30 PM—2:30 PM



THE MANAGEMENT OF URINARY TRACT INFECTIONS AND PNEUMONIAS IN LONG TERM CARE

Mark Loeb MD, MSc, FRCPC

Learning Objectives:

1. Discuss challenges in assessing UTIs and pneumonia in LTC population.
2. Discuss management of UTI and pneumonia in LTC.
3. Provide an insight into how management of UTI/ pneumonia impacts hospital transfer.

2:30 PM—4:00 PM

PANEL—MEETING RESIDENTS NEEDS IN LTC: OPPORTUNITIES AND CHALLENGES

Dr. Roger P. Skinner, Regional Supervising Coroner; Central Region - Toronto West; Office of the Chief Coroner for Ontario; Forensic Services and Coroner's Complex; Dee Lender, Executive Director, Ontario Association of Residents' Councils; Paula Chidwick, Director Research & Corporate Ethics at William Osler Health System

The Role of Coroners in LTC—Roger Skinner

Learning Objectives:

1. Updates on the Geriatric and Long Term Care Review Committee Annual Report.
2. Summarize recent findings of violence in LTC.
3. Recommend strategies to reduce risk and improve safety and health of residents.



The Role of Residents' Council in LTC—Dee Lender

Learning Objectives:

1. Review goals of Resident Councils in LTC.
2. Discuss challenges in representing a collective resident voice.
3. Discuss new visions and modalities in engaging residents from LTC.



Ethical Challenges In LTC—Paula Chidwick

Learning Objectives:

1. Discuss Ethical Consideration in decision making in LTC.
2. Discuss some of the ethical challenges around MAID in LTC.



4:00 PM

CONFERENCE ENDS

SAVE THE DATES—2018

2018 CONFERENCE

LONG TERM CARE FOR PRACTICING CLINICIANS

Annual Conference

Friday October 19, 2018 – Sunday October 21, 2018

Sheraton Centre Hotel, Toronto, Ontario

2018 LONG TERM CARE MEDICAL DIRECTOR CURRICULUM

Watch for upcoming information on the Medical Director Course, 2018

2019 & 2020 (TBC)

2019 CONFERENCE

LONG TERM CARE FOR PRACTICING CLINICIANS

Annual Conference

Friday October 25, 2019 – Sunday October 27, 2019

Sheraton Centre Hotel, Toronto, Ontario

2020 CONFERENCE

LONG TERM CARE FOR PRACTICING CLINICIANS

Annual Conference

Friday October 23, 2020 – Sunday October 25, 2020

Sheraton Centre Hotel, Toronto, Ontario



Faculty, 2017

JILL ALLISON, BSc, MBA

Jill Allison is an Accreditation Advisor with CARF Canada. Jill earned an MBA from the University of Windsor, and an undergraduate degree in Health Studies from the University of Waterloo. She has more than two decades of experience in the health sector, and has also worked as a university instructor.

ERIN BEATTIE, MD, MSC, CCFP

Dr Beattie completed her Family Medicine residency at Queen's University in 2011. She has since established an academic Family Practice in Kingston which includes outpatient and nursing home care. She is an Academic Advisor at Queen's School of Medicine and is enthusiastically involved in teaching medical students and residents.

CHRIS BRYMER, MSc, MD, FRCPC

Dr. Chris Brymer is an associate professor in the Department of medicine, division of geriatric medicine at Western University, London Ontario where he's worked for the last 24 years, mostly attending on the medicine clinical teaching unit at university hospital, doing geriatric consults at university hospital, and running geriatric clinics at St. Joseph Hospital in London, Ontario. He did Medical School at the University of Toronto, and residency at Stanford.

PAULA CHIDWICK, PHD

Dr. Paula Chidwick is the Director Research & Corporate Ethics at William Osler Health System. She is a recent graduate of Health Quality Ontario IDEAS Advanced Learning Program and specializes in Ethics Quality Improvement (EQI) promoting patient centered care and system efficiency throughout Ontario. EQI Projects at www.cheloproject.ca and www.poetproject.ca

GWENDOLYN CLEVELAND, RN, BScN, MED

Passionate about palliative care, Gwen considers it a privilege to companion with an individual, providing care and support so people can live well to the end of their life. Embracing lifelong learning, Gwen shares the learning journey believing we learn from everything we see, hear, and do.

ROB COOPER, LLB, JD, MD, CCFP, FCFP, FASAM, DABAM

Dr. Rob Cooper graduated from Osgoode Hall Law School and the University of Toronto Medical School. He completed a family practice residency at the University of Toronto. He is a Councillor for the Canadian Medical Protective Association and Chair of the OMA section for Addiction Medicine. Dr. Rob Cooper is on the Board of Directors of the OLTC.

JOHN CROSBY, MD

John Crosby is a family doctor in Cambridge. He is medical director of 2 LTC homes with 245 residents. He is an assistant professor of Medicine at U of T and Family medicine at Queens and McMaster. He is a blogger for the Medical Post and an OMA peer leader.

NICK DANEMAN MD, FRCPC, MSc

Dr. Nick Daneman is a clinician scientist in the Division of Infectious Diseases, in the Department of Medicine, at Sunnybrook Health Sciences Centre, at the University of Toronto, and an adjunct scientist at ICES. He is supported through a CIHR Clinician Scientist Salary Award, and his research program is focused on optimizing the prevention and treatment of health care associated infection.

SUSAN DEERING, MD, FCFP

Dr. Deering is a Fellow of the College of Family Physicians, and a Lecturer in the Department of Medicine at the University of Toronto. She earned her certificate for the International Interdisciplinary Wound Care Course in 2006, and has been providing care to patients with wounds, and teaching about wounds to residents and staff ever since.

CHRISTINE ELLIOTT, PATIENT OMBUDSMAN

Christine Elliott was appointed as the first Patient Ombudsman for the Province of Ontario in December 2015. Christine has been an advocate for vulnerable people for many years and is the co-founder and a director of the Abilities Centre, a sports, recreation and arts facility located in Whitby.

SID FELDMAN, MD, CCFP (COE), FCFP, CMD

Dr. Feldman is Chief, Department of Family and Community Medicine, Executive Medical Director Residential and Aging at Home Program and Medical Director of the Apotex Home for the Aged at Baycrest Health Sciences. He is an Associate Professor at the University of Toronto Department of Family and Community Medicine.

BEV FOSTER, MA, BEd, BMUS, ARCT, AMUS

Bev Foster is the Founder and Executive Director of the Room 217 Foundation, an organization dedicated to music and care. She is an experienced musician who speaks and writes extensively on the power of music, especially in life limiting situations. Her passion for music enhancing quality of life is contagious.

ABBAS GHAVAM-RASSOUL, MD, MHSc, CCFP, FCFP

Abbas Ghavam-Rassoul is a family physician at St. Michael's Hospital. His practice includes the care of patients with mental illness and HIV. He is involved in several projects in collaborative Care in Mental Health. He is Program Director for the MScCH in Health Practitioner Teacher Education at U of T.

MICHELLE GIBSON, MD, MED, CCFP (COE), FCFP

Having completed her Care of the Elderly enhanced skills training at Queen's University in 2002, Dr. Gibson established a primarily outpatient based practice in geriatrics clinics and in outpatient interdisciplinary rehabilitation in Kingston. She is extensively involved in teaching undergraduate medical students, and residents.

LESLIE GIDDENS-ZUKER, BA, BSW

Leslie Giddens-Zuker has a BA in sociology, a BSW and an MSW. She has worked for the Toronto Western Hospital for almost 20 years and has been a clinician the Geriatric Mental Health outreach team for the past 13 years. Leslie provides clinical support 5 of the long term care homes in the TC LHIN.



Faculty, 2017

ALLAN GRILL, MD, CCFP (COE), MPH, FCFP, CCPE

Dr. Allan Grill is an Assistant Professor in the Department of Family & Community Medicine at the University of Toronto and Lead Physician at the Markham Family Health Team. His role as the Ontario Renal Network Provincial Primary Care Lead focuses on innovative ways to improve Chronic Kidney Disease management.

DAVID GRIMES, MD, FRCPC

Dr. Grimes is the Director of the Parkinson's Disease and Movement Disorders Clinic, Ottawa Hospital and the Head of the Division of Neurology. His research focuses on Parkinson's disease but he treats a wide variety of movement disorders including those that require botulinum toxin injections.

DAPHNA GROSSMAN, MD, CCFP (PC), FCFP

Daphna Grossman is a palliative care physician and co-lead for Supportive Care at North York General Hospital. She is involved in teaching and is an assistant professor in the Department of Family and Community Medicine at the University of Toronto.

LOUIS KENNEDY, MD

Medical Director and attending physician, Arbour Heights LTC. Psycho-geriatrics and Rehab Medicine hospitalist, Providence Care Hospital. Together we are fostering OLTC's leadership role in CME and QI for Ontario's LTC clinicians.

AGNES KLIZ, CCFP (PC)

Dr. Agnes Kliz CCFP (PC) is a Rural Family Physician who provides comprehensive care at the Huron Community FHT predominately to Palliative and Elderly patients. She is the lead physician for the Huron Perth Palliative Outreach Team & the Chair of Rural Senior Wellness at the Gateway Center of Excellence in Rural Health. Dr. Kliz is also a co-lead of the Opioid Education Partnership which is developing interdisciplinary educational opportunities.

DEE LENDER, EXECUTIVE DIRECTOR

Dee Lender is the Executive Director of the Ontario Association of Residents' Councils (OARC). Dee has worked in LTC for about 30 years. She is passionate about person centred care, the development of authentic relationships, recognizing all people who live in LTC homes as whole human beings.

FREDA LEUNG, RPh, CDE, CGP, CRE

Freda Leung is a consultant pharmacist specializes in diabetes and geriatric medication management. In addition to practicing in the outpatient geriatric (GAIN) clinic at The Scarborough and Rouge Hospital, she also provides consultation on diabetes management to long-term care homes and engages in teaching continuing education programs for health-care professionals.

WENDY LEVINSON, MD, OC

Dr. Wendy Levinson is a Professor and Past Chair of the Department of Medicine, University of Toronto. She is Chair of Choosing Wisely Canada and leads the international Choosing Wisely collaborative. She is an Officer of the Order of Canada.

MARK LOEB, MD, MSC, FRCPC

Dr. Loeb is a Professor in the Departments of Pathology and Molecular Medicine and Clinical Epidemiology and Biostatistics. He holds the Michael G DeGroot Chair in Infectious Diseases Research and is Division Director for Infectious Diseases at McMaster. Dr. Loeb has led clinical trials on pneumonia and urinary tract infections in residents of long-term care facilities.

VINCENT MAIDA, MD, MSC, BSC, CCFP (PC), FCFP, ABHPM

Dr. Vincent Maida is a consultant with focused practice designation in Palliative Medicine and Complex Wound Management at William Osler Health System in Toronto. He is an Associate Professor at the University of Toronto and Assistant Clinical Professor at McMaster University. He is an active researcher. Over the past decade he has published more than 30 original research papers while having lectured on 4 continents, 14 countries and over 50 cities.

FRED MATHER, MD

Dr. Fred Mather is a Family Physician in Kitchener-Waterloo and Medical Director of Sunnyside Home, the municipal LTC facility for the Region of Waterloo. He is also attending physician at two homes operated by Revera Living. Dr. Mather is the President of the Ontario Long Term Care Clinicians.

JANE MEADUS, BARRISTER & SOLICITOR

Jane Meadus, Advocacy Centre for the Elderly. She is an expert in Long Term Care Home and Hospital issues relating to seniors in Ontario. She is the Author of Chapter 9 in the loose-leaf service Financial & Estate Planning for the Mature Client. 2016 Recipient of the Osgoode Professional Development Award for Outstanding Contribution to Clinical Legal Education and Distinguished Fellow of the Canadian Centre for Elder Law Studies.

ANDREA MOSER, MD, MSc, CCFP, FCFP, COE

Dr. Andrea Moser is a family physician with a focus practice in care of the elderly, Associate Medical Director, Apotex Nursing Home at Baycrest, Assistant Professor in the DFCM, University of Toronto, the Toronto Central LHIN Regional Quality Table Lead and past president of Ontario Long Term Care Physicians.

KERSTIN MOSSMAN, MD CCFP (COE) FCFP BSCN

Dr. Kerstin Mossman completed her Fellowship in Care of the Elderly at McMaster University in Hamilton, Ontario in 2005. Dr. Mossman currently works as a staff physician for seniors at the Barrie Community Health Centre. Well known for her commitment to and innovation in the treatment of the elderly, she provides consultations for the Aging Well Clinic, a joint initiative of the Barrie Community FHT and the Barrie CHC.

LYNN NASH, MD, CCFP, FCFP

Dr. Lynn Nash is a family physician in Ancaster, Ontario who has been practicing full spectrum family medicine for 37 years. She is an Associate Clinical Professor in the Department of Family Medicine, McMaster University and is a member of the Scientific Advisory Council for Osteoporosis Canada. Dr. Nash leads CME workshops on osteoporosis and falls prevention for the Ontario College of Family Physicians.



Faculty, 2017

JILL OLIVER, PHD

Jill Oliver is William Osler Health System's Community Ethicist. Jill has a PhD in Philosophy (University of Waterloo), and a Fellowship in Clinical and Organizational Ethics (University of Toronto's Joint Centre for Bioethics). Jill consults to LTC residents, family, staff, and physicians, and also leads collaborative Ethics Quality Improvement Projects.

ALEXANDRA PAPAIOANNOU, BSCN, MD, MSC, FRCP (C), FACP

Dr. Alexandra Papaioannou is a Professor of Medicine at McMaster University. She is Executive Director of the GERAS Centre. She is author of more than 300 publications with a focus on frailty, falls and fractures. She is the project lead for the Ontario Osteoporosis Strategy for Fracture Prevention in LTC.

DANIAL SCHECTER, MD, CCFP

Dr. Danial Schecter is co-founder of the Cannabinoid Medical Clinic (CMClinic) and a practicing family physician. After working along side some of Canada's leading researchers in the field of medical marijuana, Dr. Schecter developed a strong interest in the therapeutic use of cannabinoids

DALLAS SEITZ, MD, PHD, FRCPC

Dr. Seitz is the Chair of Geriatric Psychiatry at Queen's University. He completed his PhD in clinical epidemiology and health services research at the University of Toronto. He is the Provincial Medical Lead for Dementia Capacity Planning in Ontario and current President of the Canadian Academy of Geriatric Psychiatry.

ROGER SKINNER, REGIONAL SUPERVISING CORONER, TORONTO WEST

Dr. Roger Skinner – Regional Supervising Coroner, Toronto West. Before joining the Office of the Chief Coroner, he practiced family, emergency and hospitalist medicine, served as house physician for long term care facilities and co-managed a psychogeriatric unit. He is the chair of the Geriatric and Long Term Care Review Committee.

JILL STEINMAN, MANAGER

Jill Steinman is the manager of the Intake and Treatment Decisions Units at the Office of the Public Guardian and Trustee. Jill has been with the Treatment Decisions Unit since 1995 and she has also worked as a Treatment Decisions Consultant and as the unit team leader.

LORI TEEPLE, MD, CCFP (EM), FCFP (PC)

Dr. Teeple is an associate professor of medicine and family medicine at Western University. She holds a fellowship in teaching and certification in palliative care. She provides consult and front line palliative care in the community setting in Huron and Perth Counties in Southwestern Ontario.

WADE THOMPSON, BSCPHM, MSC

Wade is the clinical research manager, and a clinical pharmacist, at Medisystem Pharmacy. He recently completed his MSc in epidemiology at the University of Ottawa where he was involved in research related to de-prescribing and appropriate medication use in older persons.

MARIO TSOKAS, BSW, RSW

Mario Tsokas, BSW, RSW - Psychogeriatric Resource Consultant with the University Health Network attending to the knowledge to practice needs of staff in Long Term Care homes and community. Mario is a member of the George Brown College Gerontology Program Advisory Committee, and supported the education consortium for the Toronto Central LHIN Behaviour Support Ontario initiative.

JOBIN VARUGHESE, MD, CMD, CCFP (COE)

Jobin Varughese is a family physician with a special interest in geriatrics. He currently chairs the OMA section of LTC and COE. In addition, he is the Vice President of the OLTCC. He has a strong passion to decrease unnecessary testing and imaging in patients, especially the frail elderly.

EVELYN WILLIAMS, MD, CCFP (COE), FCFP, MHSC, CMD

Evelyn Williams has a special interest in wound care, having completed the International Interdisciplinary Wound Care course at the University of Toronto. As part of this course she developed a one-month module to teach wound care to post-graduate trainees in family medicine, during their geriatric rotation. She has presented locally, nationally and internationally on practical wound care for attending physicians. Dr. Williams is Head of the Division of Long Term Care, Sunnybrook Veterans Centre, assistant professor at the University of Toronto, and Immediate Past President of Ontario Long Term Care Clinicians.

AFSHAN ZAHEDI, BASc, MD, FRCPC

After completing a degree in Biomedical Engineering, Dr. Zahedi graduated from University of Toronto, Faculty of Medicine and completed internal medicine residency and endocrinology fellowship at University of Toronto. Currently, she is an Associate Professor of Medicine at University of Toronto, and Medical Director of the Thyroid program at Women's College Hospital.





Ontario
Long Term Care
Clinicians

EXHIBITORS AND SPONSORS, 2017

SPONSORS, 2017 *(At the time of print)*



SYMPOSIUM SATURDAY OCTOBER 21
NOVARTIS PHARMACEUTICALS CANADA
www.novartis.com



SYMPOSIUM SUNDAY OCTOBER 22
ASTRA ZENECA
www.astrazeneca.com



MOBILE APP
RESPONSIVE GROUP INC.
www.responsivegroup.ca

EXHIBITORS, 2017 *(At the time of print)*

Allergan	306
Amgen Canada	200, 204
Bayer Inc.	300
Bristol-Myers Squibb Canada	210
Classic Care Pharmacy	302
Canabo	107
Carf Canada	402
GERAS Centre	203
Health Quality Ontario	109
Hoffmann-La Roche Limited	209
Medical Pharmacies Group Limited	101, 103
Medreleaf	308
Novartis Pharmaceuticals	100
Ontario Long Term Care Clinicians	501
Ontario Long Term Care Physicians	408
Palliative Care Consultation Network	106
PointClickCare	201
Privest	207
Sanofi Pasteur Limited	208
Think Research	105
Tweed	400



**BREAKFAST SATURDAY OCTOBER 21 &
LUNCHEON SUNDAY OCTOBER 22**



ESPRESSO CAFÉ & LOUNGE
POINTCLICKCARE
www.pointclickcare.com



**LUNCHEON SATURDAY OCTOBER 21;
AGO EVENT SPONSOR**
MEDICAL PHARMACIES
www.medicalpharmacies.com



REFRESHMENT BREAKS, SATURDAY & SUNDAY
THINK RESEARCH
www.thinkresearch.com



PointClickCare®

EHR software for senior and assisted living, continuing care retirement communities and skilled nursing facilities



PROUDLY SUPPORTING THE OLTCC AS THE ESPRESSO CAFÉ LOUNGE SPONSOR 2017



Responsive Group Inc.

- Operating 30 Long Term Care and Retirement Homes in Ontario
- Communities located from Windsor to Prescott, and Niagara Falls to Gravenhurst, with many locations in the GTA
- Innovative, forward thinking and technology savvy organization driven by dedicated individuals pursuing creative projects and solutions
- Active engagement with homes' interdisciplinary team and Consultative Services to decrease use of antipsychotic medication, associated fall rates, and avoidable ED visits
- Measures and systems in place to ensure compliance with all laws, regulations, and standards
- A recognized leader in creating practical and innovative processes and programs as well as lasting partnerships that support healthy options for seniors

Managing What Matters

www.responsivegroup.ca

Now covered on provincial formulary in Quebec by the RAMQ*
(exceptional medication[†]) and in Ontario, Manitoba and
Saskatchewan (special authorization)
Not currently covered in other
provinces or territories

When your patients have

An Ejection
Fraction $\leq 40\%$

&

NYHA Class II
or III Symptoms



CONSIDER
Pr **ENTRESTO™**

To reduce the incidence
of heart failure hospitalization
and CV death⁵

ENTRESTO™ should be used in place of an ACE inhibitor or ARB

ENTRESTO™ (sacubitril/valsartan) is indicated for the treatment of heart failure with reduced ejection fraction (HFrEF) in patients with NYHA Class II or III, to reduce the incidence of cardiovascular death and heart failure hospitalization.⁵

ENTRESTO™ should be administered in combination with other heart failure therapies, in place of an angiotensin-converting enzyme (ACE) inhibitor or angiotensin II receptor blocker (ARB).⁵

Consult the ENTRESTO™ Product Monograph at www.novartis.ca/EntrestoMonograph for contraindications, warnings, precautions, adverse reactions, interactions, dosing, and conditions of clinical use. The product monograph is also available by calling 1-800-363-8883.

*Official Mark of the Régie de l'assurance maladie du Québec

†Sacubitril/Valsartan: For persons suffering from New York Heart Association (NYHA) class II or III heart failure with left ventricular systolic dysfunction (with ejection fraction $\leq 40\%$) in association with a beta-blocker unless there is a contraindication or an intolerance and as a replacement for a treatment that has been underway for at least four weeks with an angiotensin-converting enzyme inhibitor (ACE) or angiotensin II receptor antagonist (ARA).

Reference: 1. Ontario Drug Benefit Formulary. Summary of Changes. Effective April 27, 2017. Available at: http://www.health.gov.on.ca/en/pro/programs/drugs/edition_42.aspx 2. Régie de l'assurance maladie du Québec. March 22, 2017. Available at: http://www.ramq.gouv.qc.ca/SiteCollectionDocuments/liste_med/liste_med_2017_03_22_en.pdf RAMQ Official Mark of the Régie de l'assurance maladie du Québec. 3. Saskatchewan Exception Drug Status Program. Available at: <http://formulary.drugplan.health.gov.sk.ca/PDFs/APPENDIXA.pdf> 4. Manitoba Drug Benefits and Interchangeability Formulary Amendments. Available at: <https://www.gov.mb.ca/health/mbdif/docs/bulletins/bulletin93.pdf> 5. ENTRESTO™ Product Monograph. Novartis Pharmaceuticals Canada Inc. August 3rd, 2016.

 **NOVARTIS**
Novartis Pharmaceuticals Canada Inc.
Dorval, Québec H9S 1A9
www.novartis.ca
☎ 514.631.6775 ☎ 514.631.1867

PRO/ENT/0129E
Entresto is a trademark.
© Novartis
Pharmaceuticals
Canada Inc. 2017

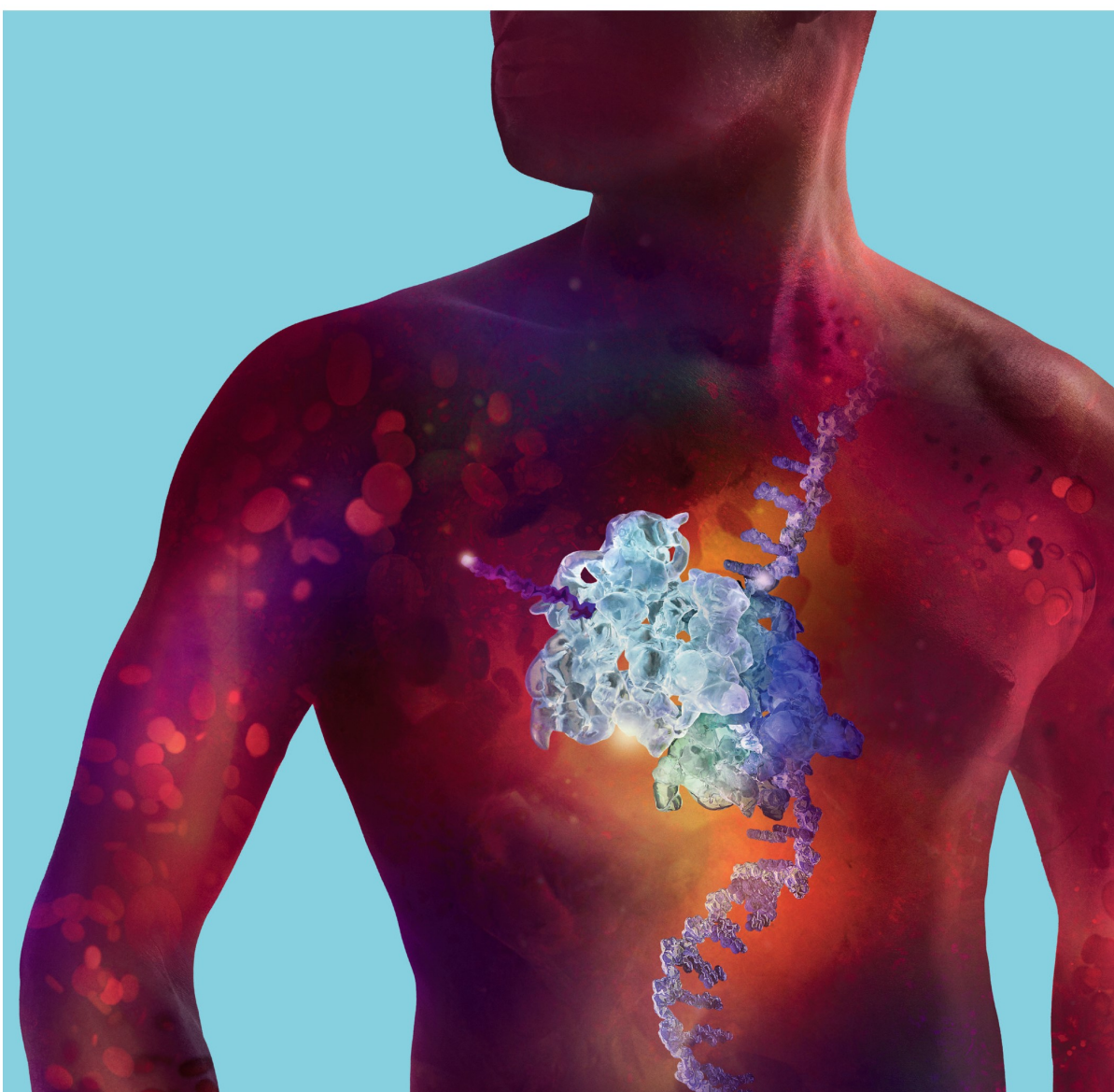


 **Entresto™**
sacubitril/valsartan



At AstraZeneca we strive to deliver great medicines to patients through innovative science. But managing disease can't be done with medicines alone. Together we can develop creative solutions to help tackle the challenges of effectively preventing and treating disease.

AstraZeneca Canada Inc. is proud to sponsor the **OLTCC Annual Clinical Conference**, as part of our commitment to supporting Canada's healthcare community.



The AstraZeneca logo is a registered trade-mark of the AstraZeneca group of companies, used under licence by AstraZeneca Canada Inc.

THANK YOU FOR REGISTERING FOR THE 2017 CONFERENCE. PLEASE **COMPLETE BOTH PAGES OF THE REGISTRATION FORM** IN FULL AND READ AND ACCEPT THE CANCELLATION CLAUSE. IF YOU HAVE ANY QUESTIONS, PLEASE CONTACT THE OFFICE AT office@oltcc.ca OR 905-404-9545.

Cancellation Policy

Cancellations received prior to **SEPTEMBER 22, 2017**, are subject to a **\$60.00 administration fee**. After September 22, 2017 there will be no refunds however delegate substitution can be made until **FRIDAY OCTOBER 6, 2017 with no substitution fee**. From **SATURDAY OCTOBER 7, 2017** a \$60.00 delegate substitution fee applies.

I HAVE READ AND ACCEPTED THE CANCELLATION CLAUSE: ☐ YES

Registration 3 Ways—STUDENTS: Proof of student status must accompany your registration—by email (office@oltcc.ca or fax 1-905-404-3727)

@ Online: <https://eis.eventsair.com/oltcc/oltcc-conference-2017> —Quick & easy and only by credit card

✉ Mail: 1143 Wentworth Street W. Suite 202, Oshawa, ON L1J 8P7

☎ Fax: 1-905-404-3727—Complete the registration form and fax to number provided. Sessions will **not be confirmed** until payment is received and processed.

Membership

If you are a current OLTC member, please choose the member rates on page 20. If you are not a member, please choose the non-member rates. If you want to join now and take advantage of the member rates, check the appropriate box under this section or go to www.oltcc.ca and join.

☐ I am a current OLTC member ☐ I am not a member and will choose the non-member rates ☐ I will be joining now

Delegate Registration

One form per person. Photocopies are accepted.

Status: Choose one: ☐ Medical Director ☐ Physician ☐ Pharmacist ☐ Nurse Practitioner ☐ Medical Resident ☐ Other _____

Please circle one: Dr. Mr. Mrs. Ms.

First Name: _____ Last Name: _____

Long Term Care Facility Name: _____

Address: _____

City: _____ Province: _____ Postal Code: _____

Email: (please print clearly) _____

Tel: _____ Fax: _____

Dietary, Allergies or Other Special Considerations

If requesting Kosher or other special meals which must be brought in from outside the facility, there will be a 'upcharge' to cover additional cost including the cost of delivery.

List here: _____

Concurrent Workshop Selection

Concurrent workshops must be chosen with registration. If you do not choose your workshops there is no guarantee that your choice will be available onsite due to room capacities. **Friday Workshops are to be chosen if you have registered for Friday, registered for the Full Conference Package, or registered for any Two Days, one being Friday.**

Choose either one full day or two half day workshops (1 in am & 1 in pm)

FRIDAY OCTOBER 20

- ☐ 8:45 AM—4:15 PM: Full Day Workshop #101
☐ 8:45 AM—4:15 PM: Full Day Workshop #102
☐ 8:45 AM—12:00 PM: Half Day Workshop #103—Main Pro+ Accredited
☐ 8:45 AM—12:00 PM: Half Day Workshop #104
☐ 1:00 PM—4:15 PM: Half Day Workshop #105
☐ 1:00 PM—4:15 PM: Half Day Workshop #106

Please choose **one** per time slot: Circle your choices

SATURDAY OCTOBER 21

1:00 PM: 201 202 203 204 205 206 207 208
2:30 PM: 301 302 303 304 305 306 307 308

SUNDAY OCTOBER 22

9:45 AM: 401 402 403 404 405 406 407 408
11:30 AM: 501 502 503 504 505 506 507



Please provide your name on this page in order to keep your registration information together.

First Name _____ Last Name: _____

Choosing Your Registration Fees CIRCLE YOUR CHOICES AND TOTAL

Registration fees are categorized by member fees, non-member fees, and medical resident/student fees. (see info on student fees below). Members fees include all categories of membership—Regular, Pharmacists and Nurse Practitioners. **Early Bird Fee Applicable to Members Only:** Choose early bird member fees if registering before and including **September 18 and only if you are a member**. **Regular Fee Member:** Choose regular member fees if registering between **September 19 and October 13**, inclusive. **Non-members or Medical Residents/Students:** Choose regular fees to **October 13**. **Late & Onsite Fees:** Choose late & onsite fees if registering from **October 14 to October 22**. **If you are not a member, and want to join now for member fees, please choose this option under Fee Totals.**

MEMBER EARLY BIRD FEES BEST VALUE!	3 DAY PACKAGE Oct 20—Oct 22	TWO DAYS Sat & Sun Oct 21, & Oct 22	ONE DAY Sat or Sun Oct 21 or 22	WORKSHOP FEES FULL DAY Friday Oct 20	WORKSHOP FEES HALF DAY Friday Oct 20	WORKSHOP FEES HALF DAY MAINPRO+ Friday Oct 20	AGO EVENT TICKET Friday Oct 21
MEMBER EARLY BIRD FEES To Sept 18	\$1100	\$685	\$365	\$580	\$280	\$375	\$50
MEMBER REGULAR FEES From Sept 19—Oct 13	\$1300	\$705	\$395	\$600	\$310	\$425	\$50
MEMBER LATE & ONSITE FEES From Oct 14—Oct 22	\$1500	\$750	\$460	\$800	\$500	\$525	\$65
NON-MEMBER REGULAR FEES To Oct 13	\$1300	\$725	\$455	\$610	\$320	\$435	\$50
NON-MEMBER ONSITE FEES From Oct 14—Oct 22	\$1550	\$820	\$565	\$810	\$510	\$530	\$65
MEDICAL RESIDENTS & STUDENT REGULAR FEES (Proof of Residency & Student Status Required) To October 13	\$560	\$360	\$200	\$300	\$150	\$215	\$50
MEDICAL RESIDENTS & STUDENT ONSITE FEES (Proof of Residency & Student Status Required) Oct 14—Oct 22	\$785	\$430	\$285	\$400	\$250	\$265	\$65

WHO IS A STUDENT? Postgraduate trainee in Faculty of Medicine or Pharmacy. Other students may be considered on an individual basis.
Please contact the office at 905-404-9545

Fee Totals

I am choosing: ☐ 3 DAY PACKAGE ☐ TWO DAYS, SATURDAY & SUNDAY ☐ ONE DAY SAT ☐ OR SUN ☐ FRIDAY HALF DAY ☐ FRIDAY FULL DAY

Registration fees as selected\$ _____

AGO Event Ticket—This is NOT included in any package. You must purchase a ticket(s) to attend.\$ _____

Please provide guest name here if applicable _____

OLTCC Membership Fee, Physician, \$250.00 - **Join Now—New Members Only**\$ _____

OLTCC Membership Fee, (NP, PHARM, PA), \$200.00 - **Join Now—New Members Only**\$ _____

SUB TOTAL FEES:\$ _____

HST—13% (HST# 783327893RT0001)\$ _____

TOTAL PAYMENT:\$ _____

Payment

By credit card: FAX TO 1-905-404-3727: VISA _____ MASTERCARD _____ AMEX _____

Credit card payments will be processed by Events In Sync, Inc. and your statement will show Events In Sync as the vendor. Events In Sync, Inc. is the managing company for the OLTCC.

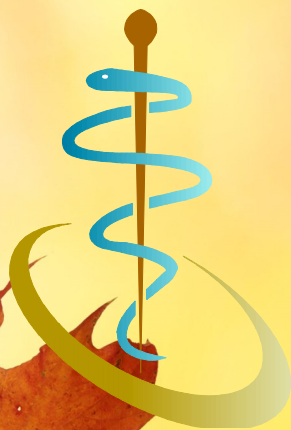
NAME ON CARD: _____

NUMBER: _____ EXPIRY _____ CVN _____

SIGNATURE: _____

By Mail: With cheque payable to: **Ontario Long Term Care Clinicians**, 1143 Wentworth Street West, Suite 202, Oshawa, ON L1J 8P7

Questions? OLTCC Office: T: 905-404-9545; office@oltcc.ca



Ontario Long Term Care Clinicians

Ontario Long Term Care Clinicians
1143 Wentworth St. West, #202
Oshawa, ON L1J 8P7
office@oltcc.ca

T: 905-404-9545
F: 905-404-3727



www.oltcc.ca
[@OnLTCC](https://twitter.com/OnLTCC)